

POSTER PRESENTATION

Open Access

New strategy to reveal the black seeds of melanomas (cancer stem cells) with their vulnerable characteristics at cellular and molecular levels

Beatrix Kotlan^{1,6*}, Gabriella Liszky^{2,7,8}, Gyorgy Naszados³, Zoltan Dolescall⁴, Laszlo Toth⁵, Laszlo Gobor⁵, Istvan N Vamosy⁵, Andras Szollar⁵, Szabolcs Horvath⁶, Klara Eles⁶, Orsolya Csuka^{4,7}, Miklos Kasler^{7,8}, Maria Godeny^{3,7,8}, Francesco M Marincola⁹

From Society for Immunotherapy of Cancer 28th Annual Meeting
National Harbor, MD, USA. 8-10 November 2013

Objectives

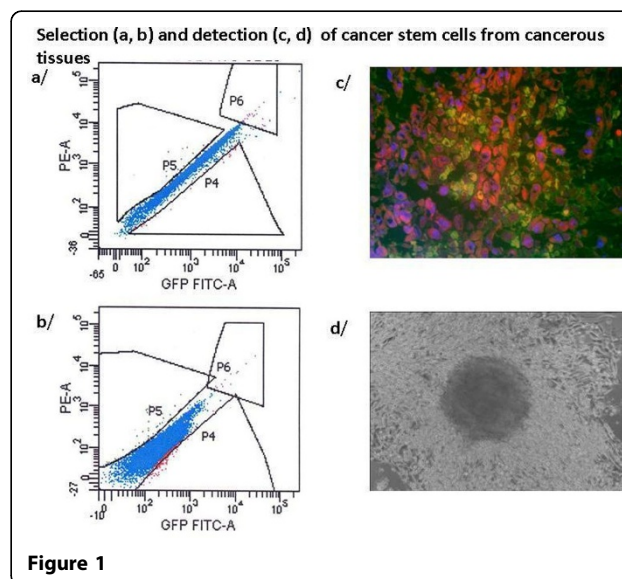
A suitable approach to select cancer stem cells (CSC), the black seed of melanomas would enable their characterization and elimination.

Methods

Cancerous tissues from primary and metastatic lesions of patients with malignant melanomas (n=150) were investigated by cell cultures and molecular genetics. Double labelled cells were sorted by BD FACSAvia Sorter. Gene expression analysis by Real Time PCR (MYiQTM, BIO-RAD) and RNA microarray (Agilent) has been performed (n=48).

Results

90% of the cell cultures grew and cancer initiating cells could be IF FACS sorted (0,1% - 1 %). Colocalisation of unique GD3 sialilated glycosphingolipids and antiCD20 binding was proved. Characteristic growth pattern, spheroid forming, CSC markers (e.g. CD133, Nestin, ABCB5, CD20 and unique GD3) was observed (Figure 1. a,b,c,d). We found enhanced gene expression of CXCR4 and other markers correlated to metastatic potential, clinical outcome and CSC presence. High throughput gene expression microarray analysis of RNA preparations of punch biopsies and CSC outgrowth are compared.



Conclusion

Unique GD3 sialilated glycosphingolipids with colocalised CD20 proved to be selection markers for CSC in metastatic melanomas. Our strategy paves the way for detection and characterization of cancer stem cells and provides material for therapeutic developments to eliminate the black seeds of melanomas.

¹Molecular Immunology and Toxicology, National Institute of Oncology, Budapest, Hungary

Full list of author information is available at the end of the article

Acknowledgements

Harry J Lloyd Charitable Trust Melanoma Research Award.

Authors' details

¹Molecular Immunology and Toxicology, National Institute of Oncology, Budapest, Hungary. ²Oncodermatology, National Institute of Oncology, Budapest, Hungary. ³Radiological Diagnostics, National Institute of Oncology, Budapest, Hungary. ⁴Pathogenetics, National Institute of Oncology, Budapest, Hungary. ⁵Oncosurgery, National Institute of Oncology, Budapest, Hungary. ⁶Surgical and Molecular Tumorpathology, National Institute of Oncology, Budapest, Hungary. ⁷Board of Directors, National Institute of Oncology, Budapest, Hungary. ⁸Univ Med Pharm, Tirgu Mures, Romania. ⁹SIDRA Medical and Research Center, Doha, Qatar.

Published: 7 November 2013

doi:10.1186/2051-1426-1-S1-P160

Cite this article as: Kotlan *et al.*: New strategy to reveal the black seeds of melanomas (cancer stem cells) with their vulnerable characteristics at cellular and molecular levels. *Journal for ImmunoTherapy of Cancer* 2013 **1**(Suppl 1):P160.

**Submit your next manuscript to BioMed Central
and take full advantage of:**

- Convenient online submission
- Thorough peer review
- No space constraints or color figure charges
- Immediate publication on acceptance
- Inclusion in PubMed, CAS, Scopus and Google Scholar
- Research which is freely available for redistribution

Submit your manuscript at
www.biomedcentral.com/submit

