

POSTER PRESENTATION

Open Access

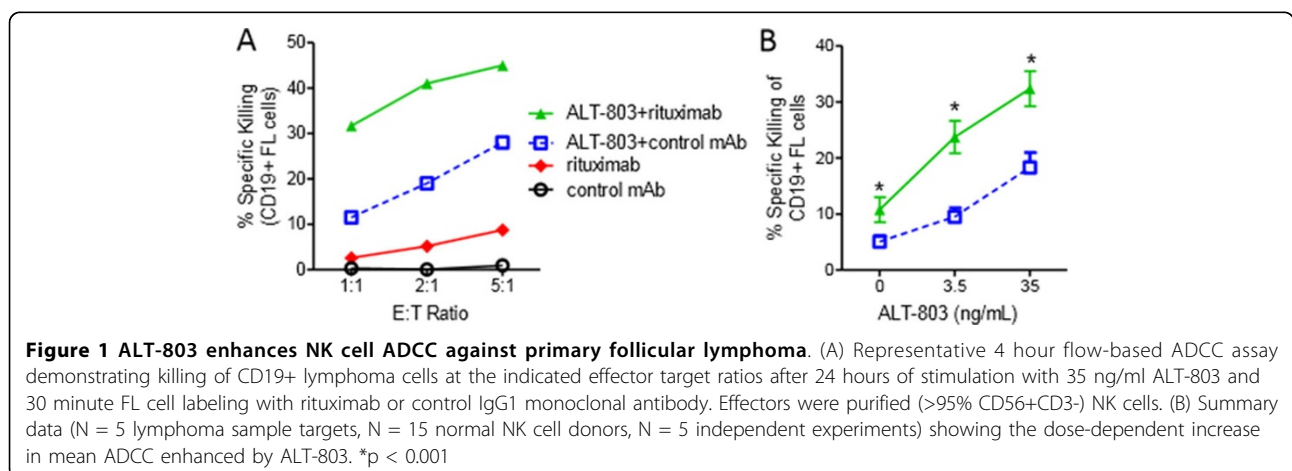
The IL-15 superagonist ALT-803 enhances anti-CD20 antibody-directed NK cell ADCC and in vivo clearance of B cell lymphomas

Maximillian Rosario¹, Bai Liu², Lin Kong², Stephanie E Schneider¹, Emily K Jeng², Peter R Rhode², Hing C Wong², Todd A Fehniger^{1*}

From Society for Immunotherapy of Cancer 29th Annual Meeting
National Harbor, MD, USA. 6-9 November 2014

NK cells are innate lymphoid cells that mediate potent anti-tumor responses against B cell malignancies in conjunction with anti-CD20 mAbs. ALT-803 is a superagonist IL-15 and dimeric IL-15 α -IgG-Fc fusion protein that effectively trans-presents IL-15 and exhibits prolonged in vivo pharmacokinetics compared to rhIL-15. We hypothesized that ALT-803 will augment anti-CD20 mAb (rituximab)-directed NK cell ADCC against B cell lymphomas, facilitating NK cell-mediated lymphoma clearance. Short-term in vitro activation with ALT-803 (0.35-35 ng/mL) increased the expression of the cytotoxic effector protein granzyme B ($p < 0.05$) in human NK cells. ALT-803 also potentiated rituximab-directed NK cell ADCC against Raji (27% vs. 74%, E:T 25:1, $p < 0.01$)

and Daudi (39% vs. 84%, E:T 2:1, $p < 0.05$) human B cell lymphoma lines. Moreover, activation of NK cells with ALT-803 significantly augmented CD20-specific ADCC against primary human follicular lymphoma cells in vitro (Figure 1, 11% vs. 33% at a 2.5:1 E:T ratio, $p < 0.001$). Animal models were employed to assess ALT-803 modulation of NK cell-mediated ADCC against B cell lymphoma in vivo. First, Daudi cells were engrafted into NK cell-competent SCID mice. Groups were treated with vehicle (day 15,18), rituximab (day 15,18), ALT-803 (day 15,18), or rituximab+ALT-803, and assessed for Daudi cell percentages in the BM at day 22. Mice treated with rituximab+ALT-803 combination therapy had significantly reduced Daudi cell burden in BM, compared to



¹Washington University School of Medicine, St Louis, MO, USA
Full list of author information is available at the end of the article

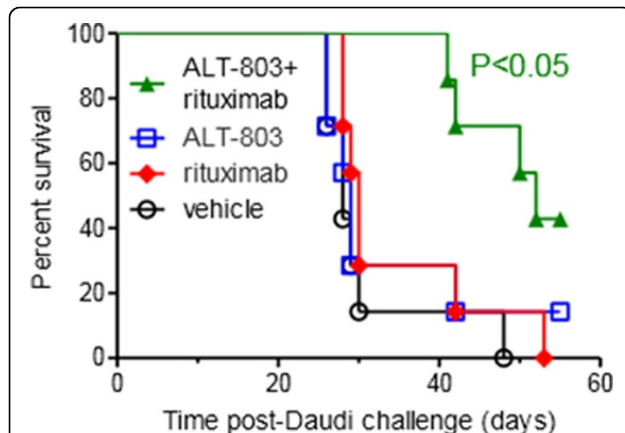


Figure 2 Alt-803+rituximab protects against lethal Daudi lymphoma challenge. Kaplan-Meier survival estimates of SCID mice injected iv with $1e7$ Daudi lymphoma cells (day 0) and treated with vehicle (PBS), ALT-803 (day 15,18 0.05 mg/kg), rituximab (10 mg/kg day 15), or ALT-803+rituximab (day 15, 18). N = 7 mice per group. Significant ($p < 0.05$) survival improvement with ALT-803+rituximab compared to vehicle treatment group.

doi:10.1186/2051-1426-2-S3-P168

Cite this article as: Rosario et al: The IL-15 superagonist ALT-803 enhances anti-CD20 antibody-directed NK cell ADCC and in vivo clearance of B cell lymphomas. *Journal for ImmunoTherapy of Cancer* 2014 2(Suppl 3):P168.

rituximab, ALT-803, or vehicle treatment (vehicle vs. ALT-803+rituximab, $38 \pm 7\%$ vs. $5 \pm 8\%$, $P = 0.005$). The enhanced antitumor activity of the combination therapy was ALT-803 dose-dependent ($p < 0.02$ for 0.02-0.2 mg/kg ALT-803 + rituximab compared to rituximab alone). Furthermore, mice treated with ALT-803+rituximab had superior survival compared to ALT-803 or rituximab monotherapy (Figure 2, $P < 0.05$). In the second model, Raji B cells expressing luciferase were engrafted into immunodeficient NOD-SCID- $\gamma_c^{-/-}$ mice (day 0), and treated with primary human NK cells (day 3) plus vehicle, ALT-803 (0.05 mg/kg q3-4 days), rituximab (day 3), or ALT-803+rituximab. At day 16, ALT-803+rituximab exhibited a significant reduction in Raji signal compared to the control groups ($p < 0.05$). ALT-803 was well tolerated at all of the administered dose levels in combination with rituximab. Thus, ALT-803 represents an effective IL-15 receptor-agonist that augments NK cell cytotoxic potential and ADCC against malignant B cells in vitro, and significantly increases rituximab-triggered clearance of B cell lymphoma by NK cells in two in vivo models. Based on these findings, a Phase 1/2 clinical trial of ALT-803 plus rituximab is planned for patients with relapsed/refractory indolent NHLs.

Authors' details

¹Washington University School of Medicine, St Louis, MO, USA. ²Altor BioScience Corporation, Miramar, FL, USA.

Published: 6 November 2014

Submit your next manuscript to BioMed Central and take full advantage of:

- Convenient online submission
- Thorough peer review
- No space constraints or color figure charges
- Immediate publication on acceptance
- Inclusion in PubMed, CAS, Scopus and Google Scholar
- Research which is freely available for redistribution

Submit your manuscript at
www.biomedcentral.com/submit

